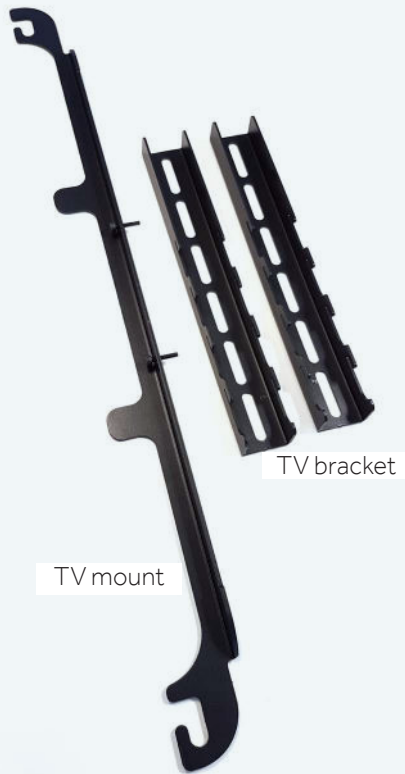


How to mount TV bracket on **Four Us® Booth**

TV Bracket Package



Tools used in the manual:

Umbraco key, size 3

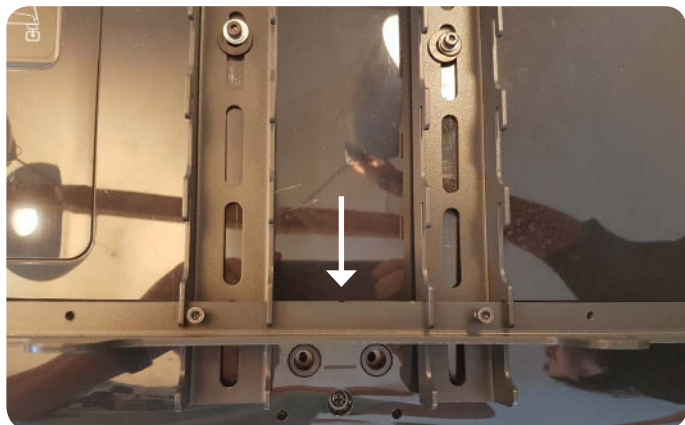
Umbraco key, size 5



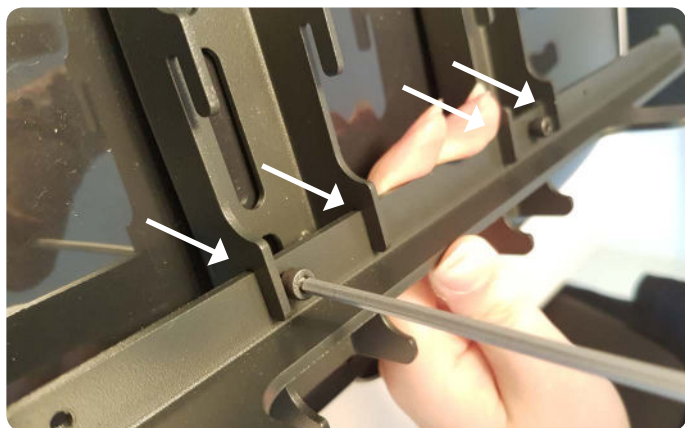
- 1 Attach the brackets to your TV (OBS max. 20kg TV). Use screws which fit the TV, but choose washers which is bigger than the holes in the bracket. It is important, that you use a tool to tighten the screws. The TV brackets is made for VESA 100x100, 150x150 and 200x200 mm.



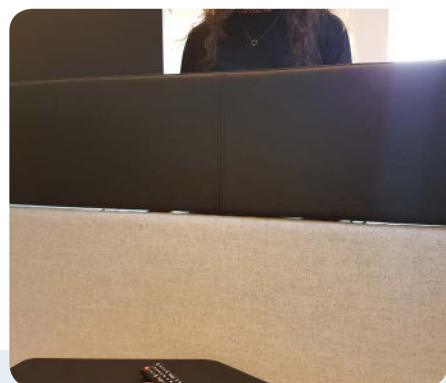
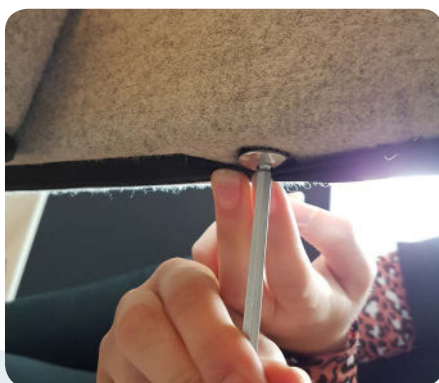
- 2** Add the TV mount to the brackets. The lower the TV mount is placed on the brackets, the higher the TV will be placed on the Four Us Booth. There is a mark in the middle of the TV mount, which should be centered between the two TV brackets.



- 3** Tighten the screws with an size 3 Umbraco key, while pushing the TV mount against the tabs on the brackets.



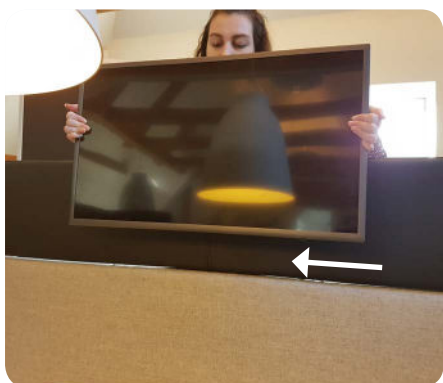
- 4** Loosen the threaded rods under the couch with an Umbraco key size 5. Do not screw the rods all the way out, but only until you can lift the top part 0,5-1 cm up.



- 5 Lift the TV and place the mount in the gap between the couch and the top part. The threaded rod should slide into the gap in the mount.



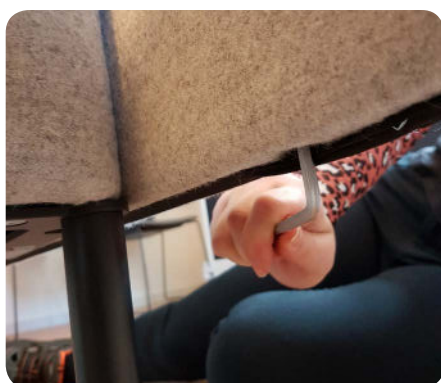
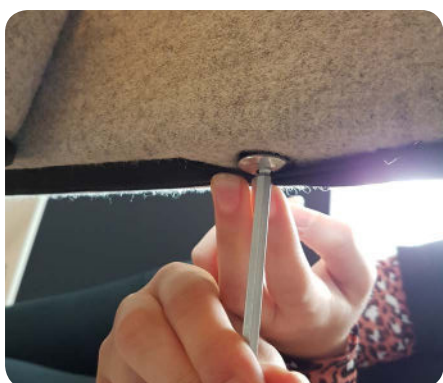
- 6 Put the TV in place by sliding it to the right, until the mount stops it. The threaded rod should now be in the mount hole.



- 7 When the TV is in place, push the top part down. It is important to press forward while pushing down.



- 8 Tighten both threaded rods loosely, **before** tightening the rods firmly.



9 The TV is now in place.

